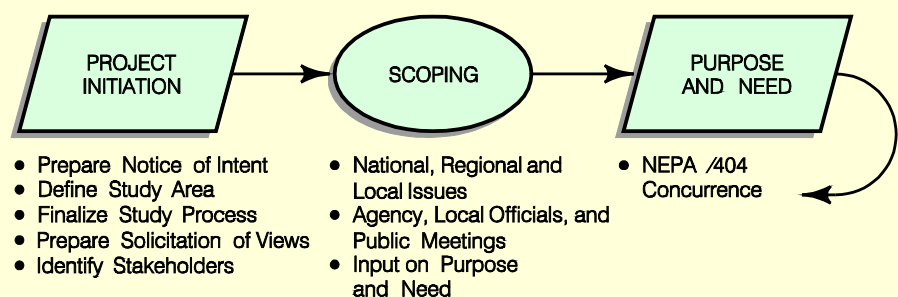
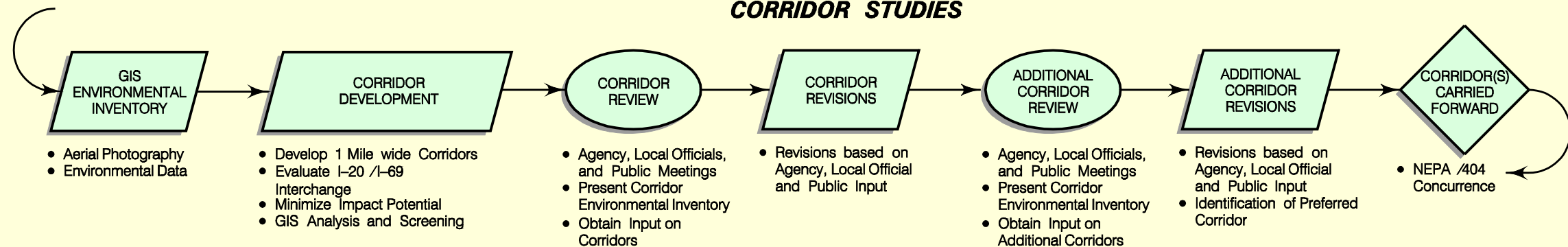


### SCOPING and PURPOSE and NEED



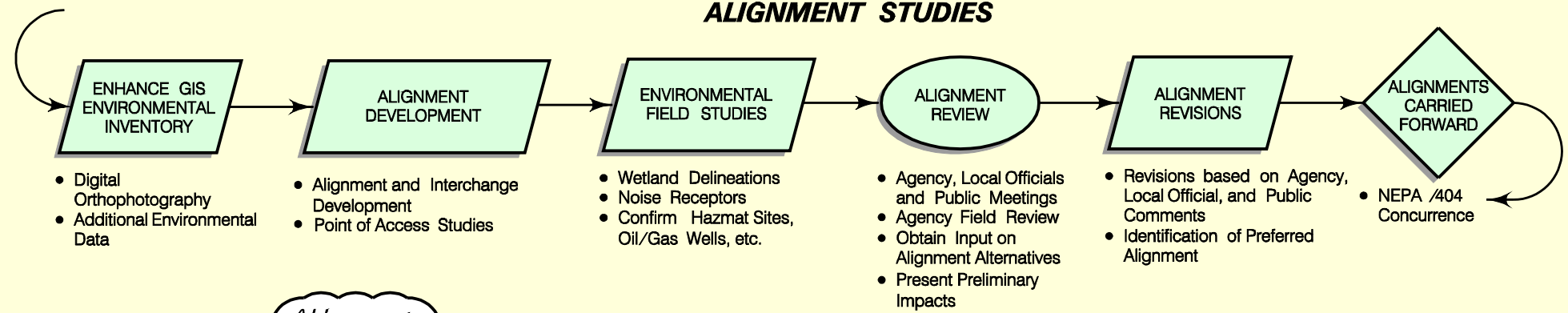
- Prepare Notice of Intent
- Define Study Area
- Finalize Study Process
- Prepare Solicitation of Views
- Identify Stakeholders
- National, Regional and Local Issues
- Agency, Local Officials, and Public Meetings
- Input on Purpose and Need
- NEPA /404 Concurrence

### CORRIDOR STUDIES



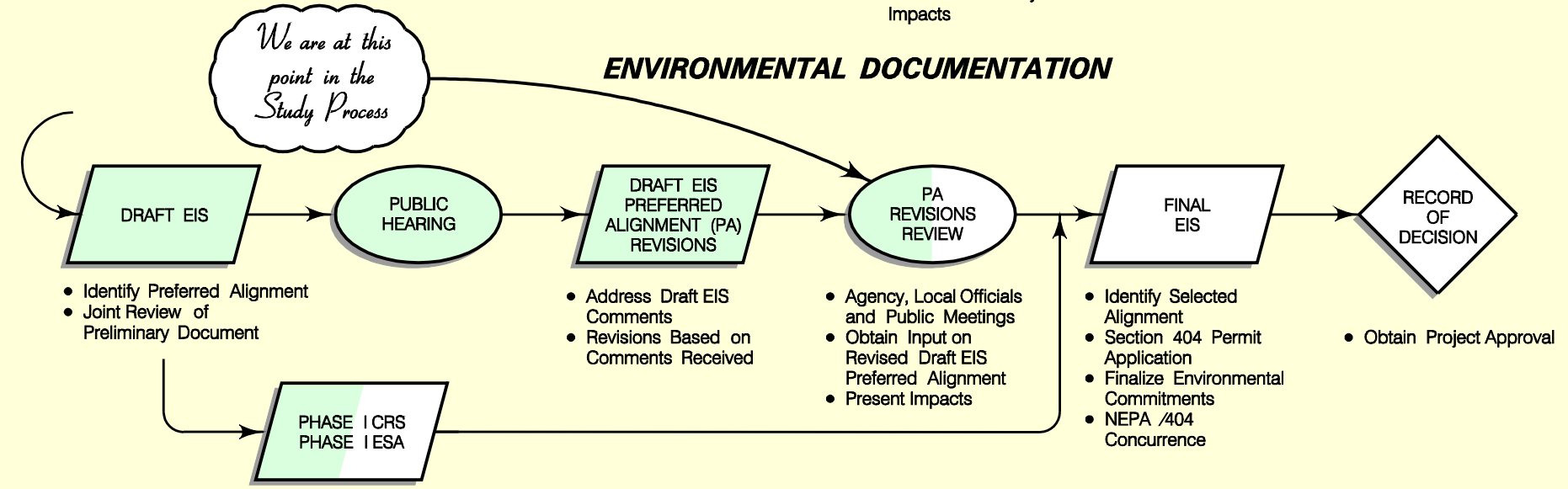
- Aerial Photography
- Environmental Data
- Develop 1 Mile wide Corridors
- Evaluate I-20 /I-69 Interchange
- Minimize Impact Potential
- GIS Analysis and Screening
- Agency, Local Officials, and Public Meetings
- Present Corridor Environmental Inventory
- Obtain Input on Corridors
- Revisions based on Agency, Local Official and Public Input
- Agency, Local Officials, and Public Meetings
- Present Corridor Environmental Inventory
- Obtain Input on Additional Corridors
- Revisions based on Agency, Local Official and Public Input
- Identification of Preferred Corridor
- NEPA /404 Concurrence

### ALIGNMENT STUDIES



- Digital Orthophotography
- Additional Environmental Data
- Alignment and Interchange Development
- Point of Access Studies
- Wetland Delineations
- Noise Receptors
- Confirm Hazmat Sites, Oil/Gas Wells, etc.
- Agency, Local Officials and Public Meetings
- Agency Field Review
- Obtain Input on Alignment Alternatives
- Present Preliminary Impacts
- Revisions based on Agency, Local Official, and Public Comments
- Identification of Preferred Alignment
- NEPA /404 Concurrence

### ENVIRONMENTAL DOCUMENTATION



- Identify Preferred Alignment
- Joint Review of Preliminary Document
- Address Draft EIS Comments
- Revisions Based on Comments Received
- Agency, Local Officials and Public Meetings
- Obtain Input on Revised Draft EIS Preferred Alignment
- Present Impacts
- Identify Selected Alignment
- Section 404 Permit Application
- Finalize Environmental Commitments
- NEPA /404 Concurrence
- Obtain Project Approval

SYMBOLOLOGY:  
 ○ Outreach Period  
 ▭ Work in Progress  
 ◇ Decision and /or Concurrence Point

I-69 US 171 to I-20		
<b>STUDY PROCESS</b>		
Baker		