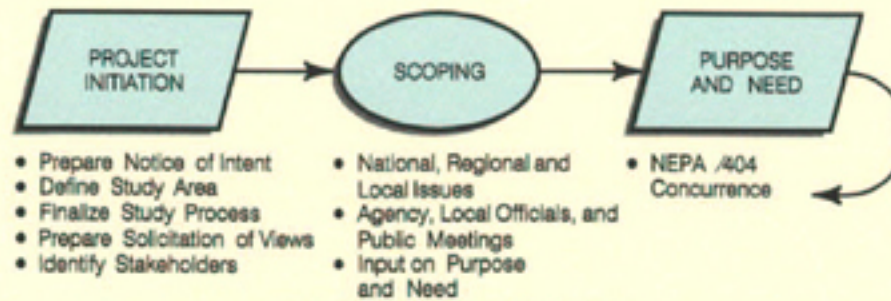


SCOPING and PURPOSE and NEED

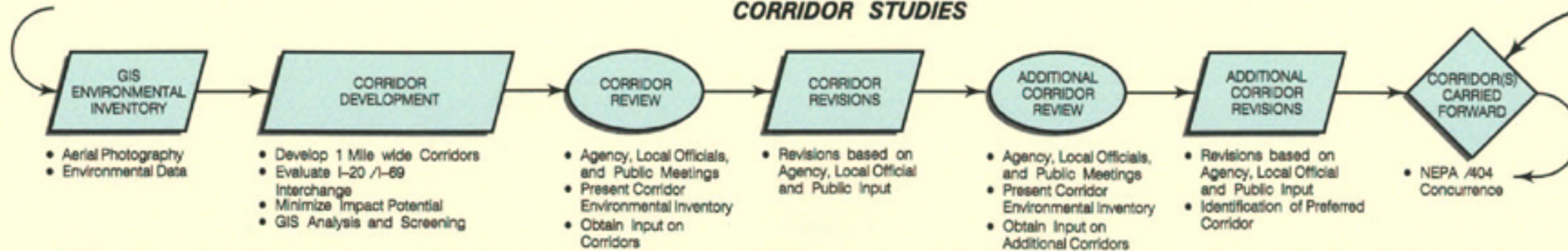


- Prepare Notice of Intent
- Define Study Area
- Finalize Study Process
- Prepare Solicitation of Views
- Identify Stakeholders

- National, Regional and Local Issues
- Agency, Local Officials, and Public Meetings
- Input on Purpose and Need

- NEPA /404 Concurrence

CORRIDOR STUDIES



- Aerial Photography
- Environmental Data

- Develop 1 Mile wide Corridors
- Evaluate I-20 /I-69 Interchange
- Minimize Impact Potential
- GIS Analysis and Screening

- Agency, Local Officials, and Public Meetings
- Present Corridor Environmental Inventory
- Obtain Input on Corridors

- Revisions based on Agency, Local Official and Public Input

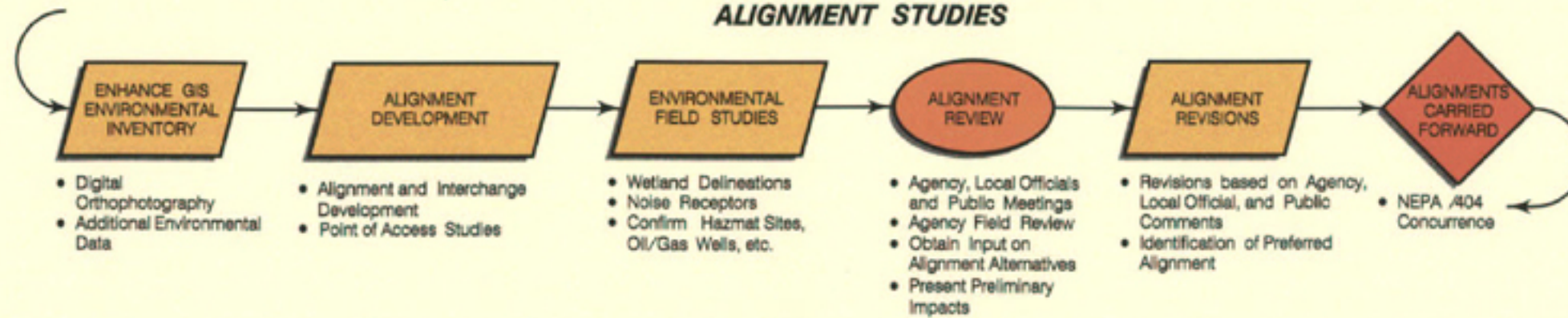
- Agency, Local Officials, and Public Meetings
- Present Corridor Environmental Inventory
- Obtain Input on Additional Corridors

- Revisions based on Agency, Local Official and Public Input
- Identification of Preferred Corridor

- NEPA /404 Concurrence

We are at this point in the Study Process

ALIGNMENT STUDIES



- Digital Orthophotography
- Additional Environmental Data

- Alignment and Interchange Development
- Point of Access Studies

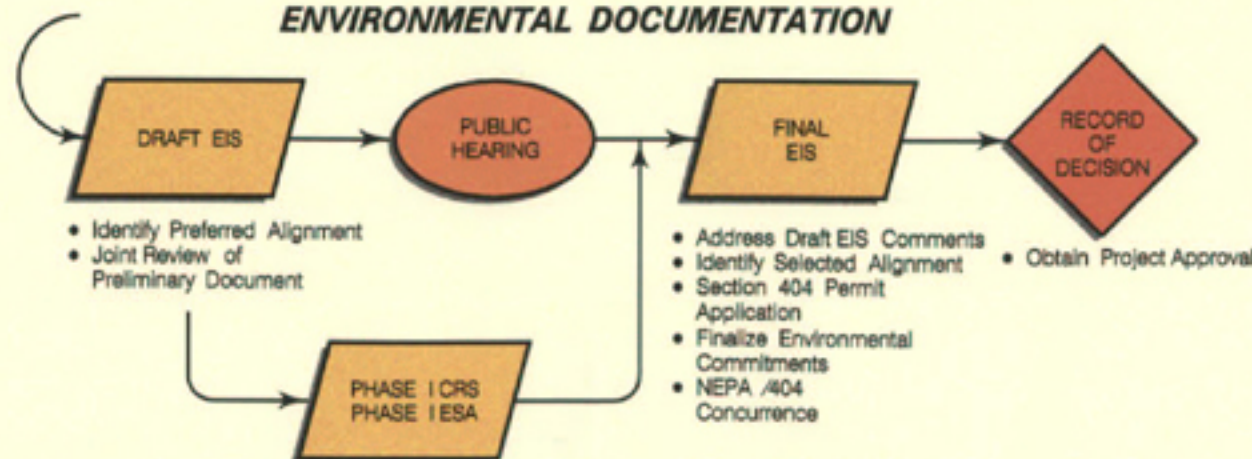
- Wetland Delineations
- Noise Receptors
- Confirm Hazmat Sites, Oil/Gas Wells, etc.

- Agency, Local Officials and Public Meetings
- Agency Field Review
- Obtain Input on Alignment Alternatives
- Present Preliminary Impacts

- Revisions based on Agency, Local Official, and Public Comments
- Identification of Preferred Alignment

- NEPA /404 Concurrence

ENVIRONMENTAL DOCUMENTATION



- Identify Preferred Alignment
- Joint Review of Preliminary Document

- Address Draft EIS Comments
- Identify Selected Alignment
- Section 404 Permit Application
- Finalize Environmental Commitments
- NEPA /404 Concurrence

- Obtain Project Approval

- SYMBOLOLOGY:
- Outreach Period
 - ▭ Work in Progress
 - ◇ Decision and /or Concurrence Point

I-69 US 171 to I-20	
STUDY PROCESS	